

FLOOR LIGHT & MAGNIFIER ASSEMBLY INSTRUCTIONS

ATTENTION:

- Please review all the instructions and diagrams carefully before assembling the lamp. This will reduce assembly time and avoid damage.
- The power cord has been pre-installed for your convenience.
- Do not force parts. Do not apply excessive force to wires during assembly.
- Remove all the packing materials before use.

WARNING:

- Do not look directly into the LEDs and do not shine them into the eyes of others. As with other high intensity light sources, eye damage may occur.
- To avoid the risk of damage or fire, do not leave the magnifier in direct sunlight or allow sunlight to pass through the lens.
- Do not look through the lens directly at the sun or other bright lights, as eye damage may occur.

ASSEMBLY

Step 1: Remove the paper tray from the carton. Carefully remove the flexible arm with the Magnifier Lamp and then the upper (short) metal pole from the tray. Gently lay them on the floor or a large work surface (See Illustration A). The lamp base and lower (long) metal pole remain inside the tray.

Note: Remove all washer protectors before installing the poles.

Step 2: Screw the upper (short) metal pole clockwise into the flexible arm end until it is tightened (Illustration A, Step 2).

Step 3: Screw the lower (long) metal pole clockwise into the lamp base until it is tightened (Illustration B, Step 3).

Step 4: Place the upper lamp pole close to the lower lamp pole. Gently insert the excess power cord back into the upper or lower pole (Illustration B, Step 4).

Step 5: Install the upper pole into the lower pole by screwing clockwise until it is tightened (Illustration B, Step 5).

Step 6: Insert batteries or plug in the supplied AC adapter. The lamp is now ready for use.

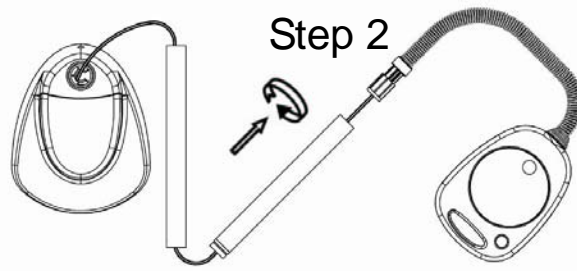


Illustration A

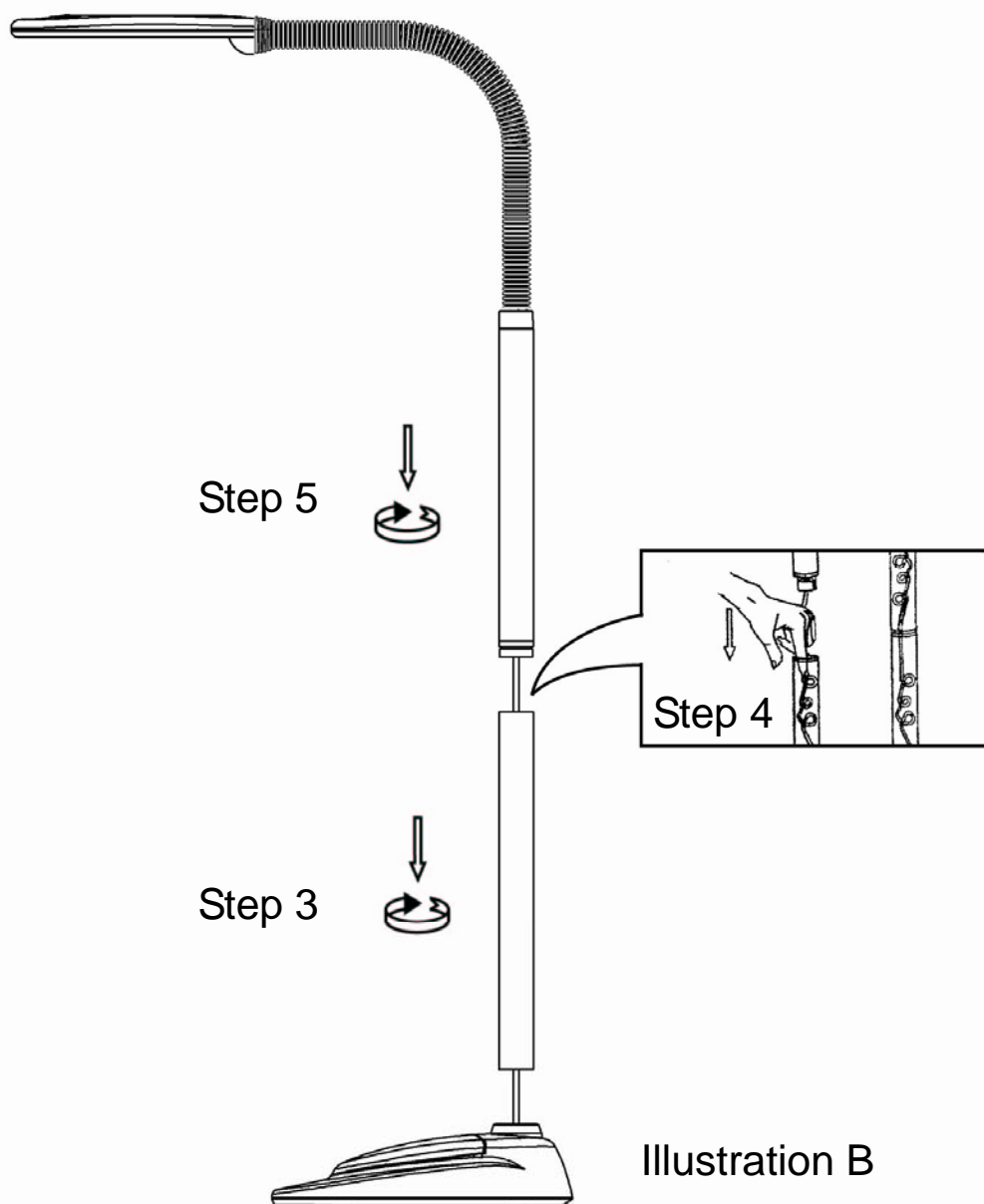


Illustration B

POWER SPECIFICATIONS

This product may be operated with batteries or with the supplied AC adapter. It is generally recommended that you remove the batteries if you elect to use the AC adapter, however the AC adapter may be used with the batteries installed.

Batteries:

- 1.5V D Batteries (x3)

AC/DC Adapter:

- Input: AC 100-240V, 50 – 60 HZ
- Output: 4V DC 400 mA with a female DC plug
- The AC/DC jack is located on the back of the lamp base.

Inserting / Replacing Batteries:

- Slide off the battery door located on the top of lamp base. Insert 3 D size batteries in the direction indicated by the diagram located in the battery compartment.
- Do not allow any metallic material to touch the battery compartment contacts or any of the batteries. Such contact may cause batteries to heat up and leak or explode, which may cause personal injury.
- Alkaline batteries are recommended.
- Do not mix battery brands. (All three batteries must be the same brand.)
- Do not mix old and new batteries together.
- Do not mix alkaline, carbon-zinc, or rechargeable (nickel-cadmium) batteries.
- Replace batteries when light output becomes weak or nonexistent.
- Remove batteries when the light is not in use for an extended period.

OPERATION

The ON/OFF switch is located on the top of the lamp head next to the magnifying lens. Press it once to turn on the light. Press again to turn off the light. If the light fails to operate after turning the switch on, check the batteries to determine if they all have been inserted correctly according to the diagram in the battery compartment.